

Алматы (7273)495-231  
Ангарск (3955)60-70-56  
Архангельск (8182)63-90-72  
Астрахань (8512)99-46-04  
Барнаул (3852)73-04-60  
Белгород (4722)40-23-64  
Благовещенск (4162)22-76-07  
Брянск (4832)59-03-52  
Владивосток (423)249-28-31  
Владикавказ (8672)28-90-48  
Владимир (4922)49-43-18  
Волгоград (844)278-03-48  
Вологда (8172)26-41-59  
Воронеж (473)204-51-73  
Екатеринбург (343)384-55-89

Иваново (4932)77-34-06  
Ижевск (3412)26-03-58  
Иркутск (395)279-98-46  
Казань (843)206-01-48  
Калининград (4012)72-03-81  
Калуга (4842)92-23-67  
Кемерово (3842)65-04-62  
Киров (8332)68-02-04  
Коломна (4966)23-41-49  
Кострома (4942)77-07-48  
Краснодар (861)203-40-90  
Красноярск (391)204-63-61  
Курск (4712)77-13-04  
Курган (3522)50-90-47  
Липецк (4742)52-20-81

Магнитогорск (3519)55-03-13  
Москва (495)268-04-70  
Мурманск (8152)59-64-93  
Набережные Челны (8552)20-53-41  
Нижний Новгород (831)429-08-12  
Новокузнецк (3843)20-46-81  
Ноябрьск (3496)41-32-12  
Новосибирск (383)227-86-73  
Омск (3812)21-46-40  
Орел (4862)44-53-42  
Оренбург (3532)37-68-04  
Пенза (8412)22-31-16  
Петрозаводск (8142)55-98-37  
Псков (8112)59-10-37  
Пермь (342)205-81-47

Ростов-на-Дону (863)308-18-15  
Рязань (4912)46-61-64  
Самара (846)206-03-16  
Санкт-Петербург (812)309-46-40  
Саратов (845)249-38-78  
Севастополь (8692)22-31-93  
Саранск (8342)22-96-24  
Симферополь (3652)67-13-56  
Смоленск (4812)29-41-54  
Сочи (862)225-72-31  
Ставрополь (8652)20-65-13  
Сургут (3462)77-98-35  
Сыктывкар (8212)25-95-17  
Тамбов (4752)50-40-97  
Тверь (4822)63-31-35

Тольятти (8482)63-91-07  
Томск (3822)98-41-53  
Тула (4872)33-79-87  
Тюмень (3452)66-21-18  
Ульяновск (8422)24-23-59  
Улан-Удэ (3012)59-97-51  
Уфа (347)229-48-12  
Хабаровск (4212)92-98-04  
Чебоксары (8352)28-53-07  
Челябинск (351)202-03-61  
Череповец (8202)49-02-64  
Чита (3022)38-34-83  
Якутск (4112)23-90-97  
Ярославль (4852)69-52-93

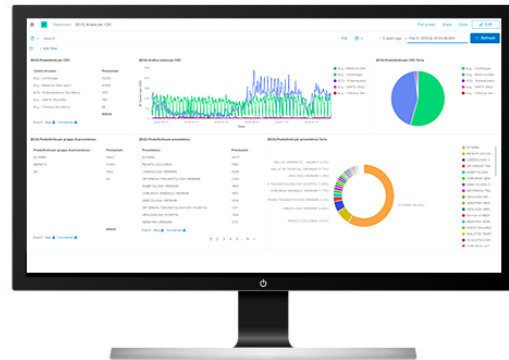
Россия +7(495)268-04-70

Казахстан +7(7172)727-132

Киргизия +996(312)96-26-47

<https://esaote.nt-rt.ru> || [eoq@nt-rt.ru](mailto:eoq@nt-rt.ru)

# SUITESTENSA Analytics



## SUITESTENSA Analytics

SUITESTENSA Analytics is the Business Intelligence module dedicated to the processing, visualization, extraction and subsequent export of data. It allows to perform advanced and elaborated statistical, quantitative and qualitative analysis on the activity of one's own Facility in a multidisciplinary context, both for purposes related to management control and for clinical/scientific purposes. The system architecture allows you to query huge databases obtaining results in real time, viewable through highly customizable web dashboards.



productivity reports, which include useful indicators for management control and workload monitoring, such as, for example:

list of the types of examinations performed, possibly divided by operating unit, origin, time bands, modality/room;

report on the timing in the different phases of the workflow (acceptance, execution, reporting) with the possibility of monitoring the processing time of the report for each operator;

report on the services provided divided by supplying unit, origin, status (planned, accepted, performed, reported);

report and count of the services performed by Technician, by Physician, by Method, by room or by Mode;

report on the number of signed reports divided by diagnostic code, type of procedure, location, reporting physician, etc..;

report for monitoring waiting times according to the urgency of each service and Service Level Agreement.

clinical reports, which combine the results obtained through the use of powerful free text search engines - applied for example to searches within the textual fields of the report - with the structured data present in the report itself such as measurements performed through the viewer, received from the diagnostic modalities, or processed by the post-processing and artificial intelligence systems. It is also possible to correlate the diagnostic data with medical history data, clinical data (e.g. risk factors) and the clinical question.

Wide configurability and versatility, allowing the creation of statistical extraction dashboards according to both the scope of application and the organization of the facility. Within the different dashboards, it is also possible to act interactively to modify and combine research parameters in order to display and extract specific reports.

Real-time updating.

User authentication and profiling, to filter dashboards and data according to the user profile and the operating units for which the user having access has visibility rights.